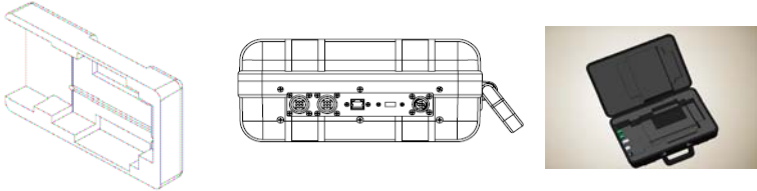
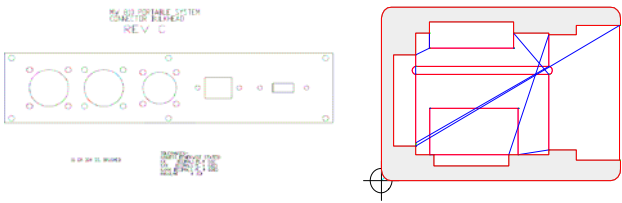


PROJECT: Our customer needed a "Plug-N-Play" carry case for a mobile diagnostic machine. The case needed protective bulkheads mounted through the case wall, and foam on the inside to secure the unit and allow for venting.

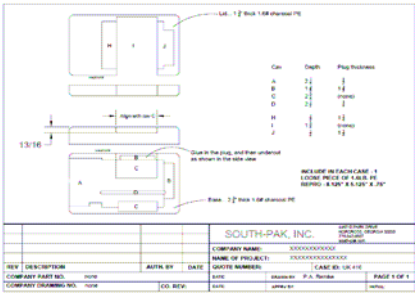
Step 1: We worked closely with our customers engineers to create 3-D CAD models of the case and contents. We were able to modify a stock molded case to fit the overall requirement.



Step 2: After conceptual approval, we designed the foam securing system, and the aluminum plate bulkhead, both were setup for watercut.



Step 3: A prototype case was assembled per the approved layout.



Step 4: The prototype case was delivered to the customer for a test run. Shortly thereafter, the project was released for volume production



Step 5: We performed a full project documentation, quality control reports and a permanent project file. A certificate of compliance and quality record was sent to the customer