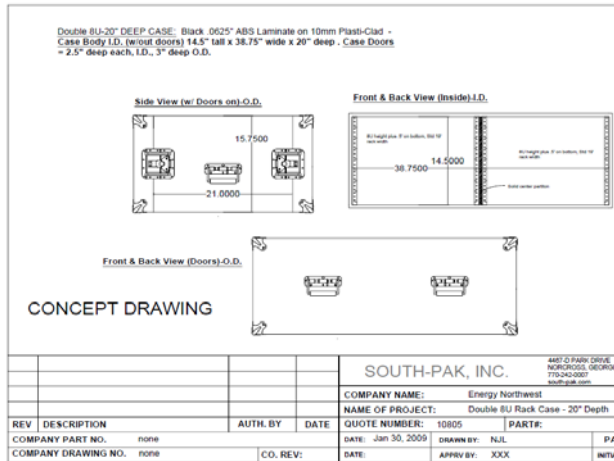


PROJECT:

Our customer needed a double sided, 8 space custom rack case for diagnostic purposes in nuclear power plants. No wood or fibrous material was allowed in the case construction.

*Step 1:*

After receiving detailed equipment specifications and loading configurations, we presented the customer with a concept drawing of the case:



*Step 2:*

After review, the customer ordered the prototype case. We converted our concept drawing into production schematics and built the case using our Plasti-Clad material with heavy duty extrusions.



*Step 3:*

The prototype case was delivered, it was approved, and the project moved forward into the production phase.

*Step 4:*

We performed a full project documentation, quality control reports and a permanent project file. A certificate of compliance and quality record was sent to the customer.